

POVERELLO CENTER



POVERELLO CENTER

COMMEMORATING

50 YEARS

FOOD • SHELTER • HELP • HOPE



2024  
ANNUAL  
REPORT

# **OUR MISSION**

**The Poverello Center  
provides food, shelter, help,  
& hope to all who ask.**

# **OUR VISION**

**We believe all people deserve to  
be treated with dignity and  
respect, regardless of their  
housing status. We envision a  
collaborative and supportive  
community in which everyone  
has a safe place to call home.**

# **A LETTER FROM JILL**

## **OUR 50<sup>TH</sup> ANNIVERSARY**

**Since the Poverello Center opened in 1974, we have served over 3.7 million meals and since we opened our shelter in 1981, we have provided over 825,000 nights of shelter to our unhoused neighbors. In the beginning, we were a small group of dedicated volunteers, serving just one meal a day. Since then, we've grown into a cornerstone of the Missoula Community, and our five vital programs – Shelter, Food, Homeless Outreach, Veterans, and Medical Respite – serve hundreds of people every day.**



**We envision a community where anyone facing homelessness can quickly access food, shelter, medical and mental health care, case management, and all other necessary resources, with the ultimate goal of achieving stable housing. After so long providing these essential resources and acting as a stepping stone for growth, we believe that a world like this is possible, and that we can build it.**

**We will always be a necessary resource, especially as housing, food, and economic insecurity deepen across the nation. However, a half-century of service proves that we will always be a piece of the Missoula safety net, as long as our community stands with us in valuing our vulnerable neighbors.**

**In gratitude,**

**Jill Bonny, LMSW  
Executive Director  
The Poverello Center**

# OUR PROGRAMS

## Food

Meals

Food  
Rescue

Food  
Pantry

Sack  
Lunches

Poverello  
Center

Johnson  
Street  
Emergency  
Shelter

## Shelter

Resident  
Volunteer  
Program

Johnson  
Street  
Emergency  
Shelter

Poverello  
Center

## Veterans

Housing  
Montana  
Heroes

Veterans  
Shelter  
Program

Clark Fork  
Inn

## Medical Respite

## Outreach

Homeless  
Outreach

Business  
Outreach

# OUR MISSION: FOOD



376,548 lbs of food  
rescued from  
9 grocery stores

146,440 total meals  
served to 2,740  
people

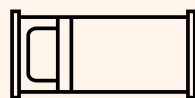
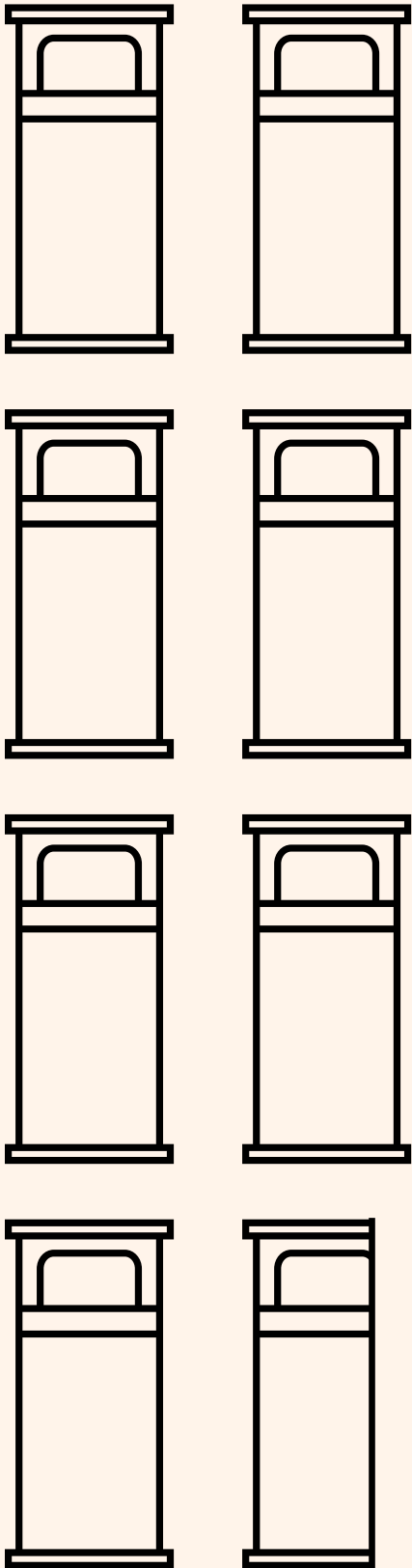


59,800 sack lunches  
provided

993 food pantry  
visits from 290  
households

# OUR MISSION: SHELTER

77,373 beds provided  
to 1,394 people



= 10,000 beds filled

# OUR MISSION: HELP



59 unhoused veterans  
in Housing Montana  
Heroes and Veterans  
Service Programs

4,306 food items and  
2,521 material items  
provided to people living  
unsheltered



839 medication  
pickups for people  
staying in shelter or  
living unhoused

# OUR MISSION: HOPE



52 Resident  
Volunteers learned  
career skills working  
in shelter

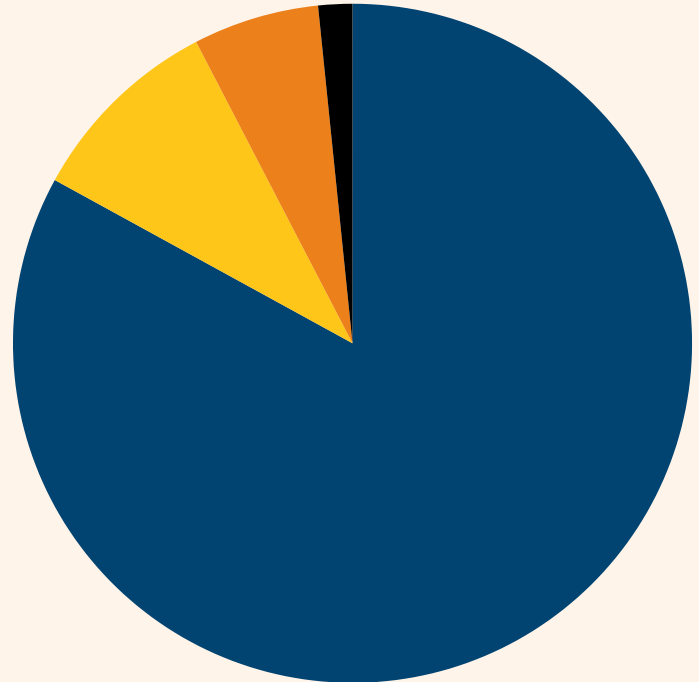
50 people recovered  
from acute illness or  
injury in Medical  
Respite



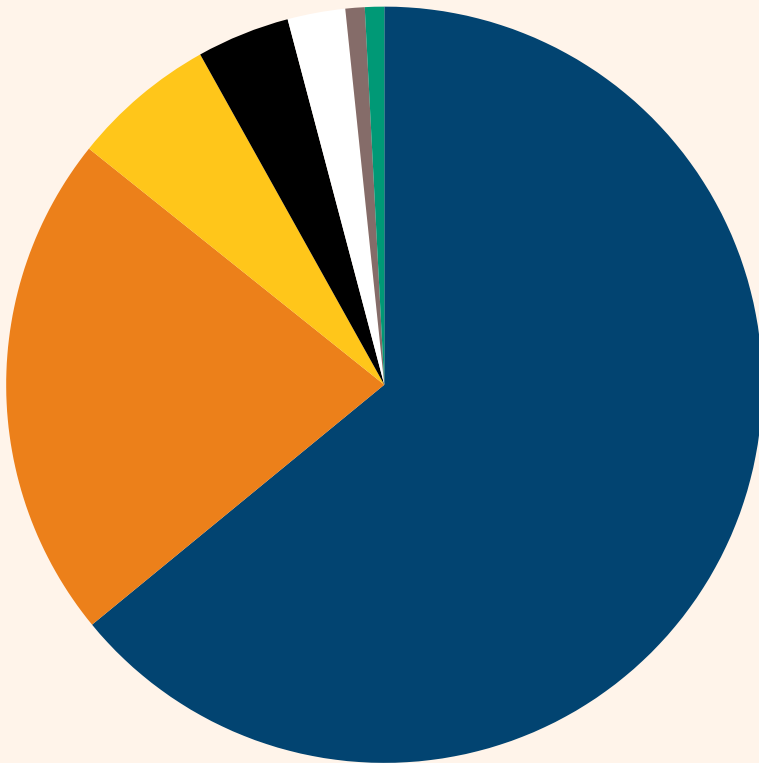
155 volunteers  
contributed 6,016  
hours, saving  
\$201,475 in labor  
costs

# WHO ARE OUR SHELTER GUESTS?

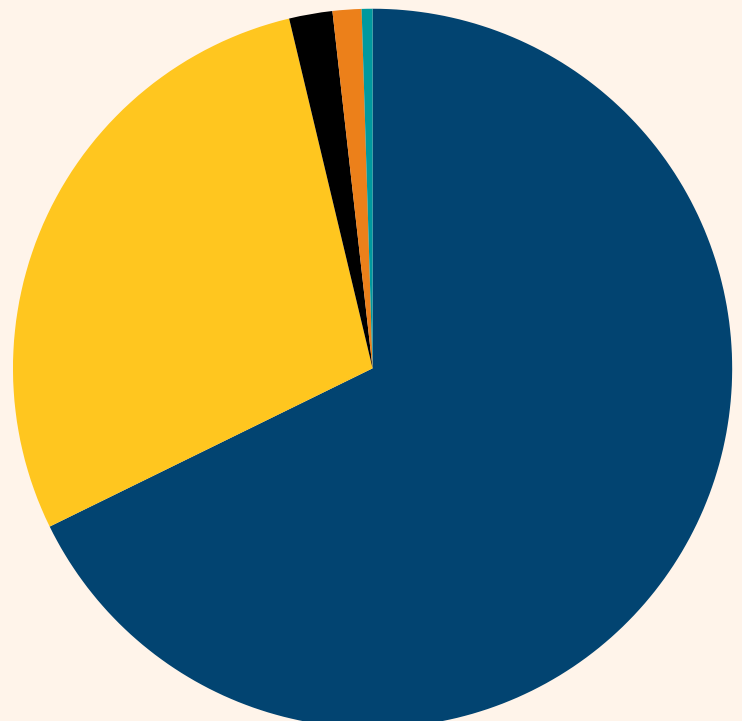
● 25-64 ● 65+ ● 18-24 ● No response



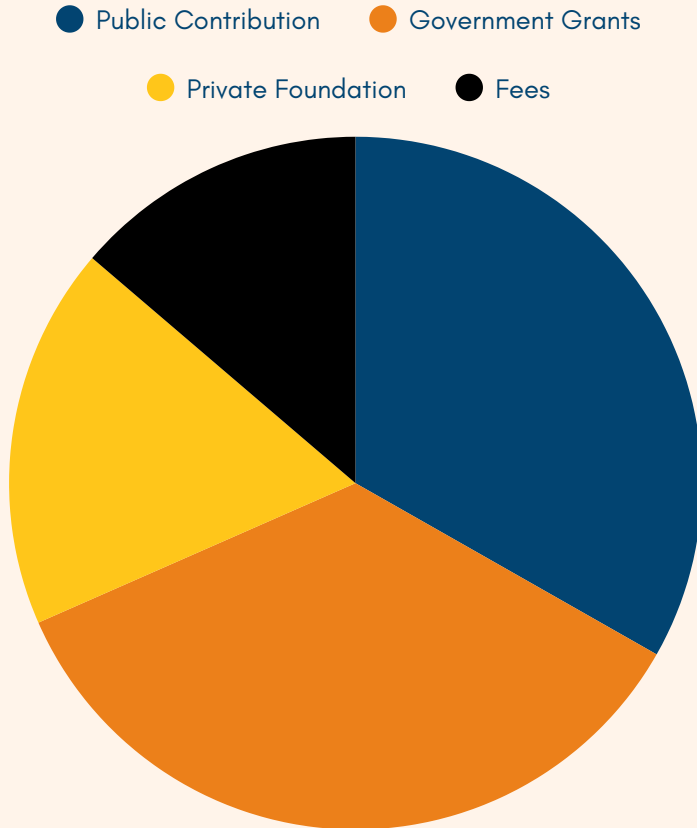
● White ● Native American  
 ● Hispanic / Latino ● Black ● No Response  
 ● Hawaiian / Pacific Islander ● Asian



● Men ● Women ● Transgender  
 ● Non-binary ● No response

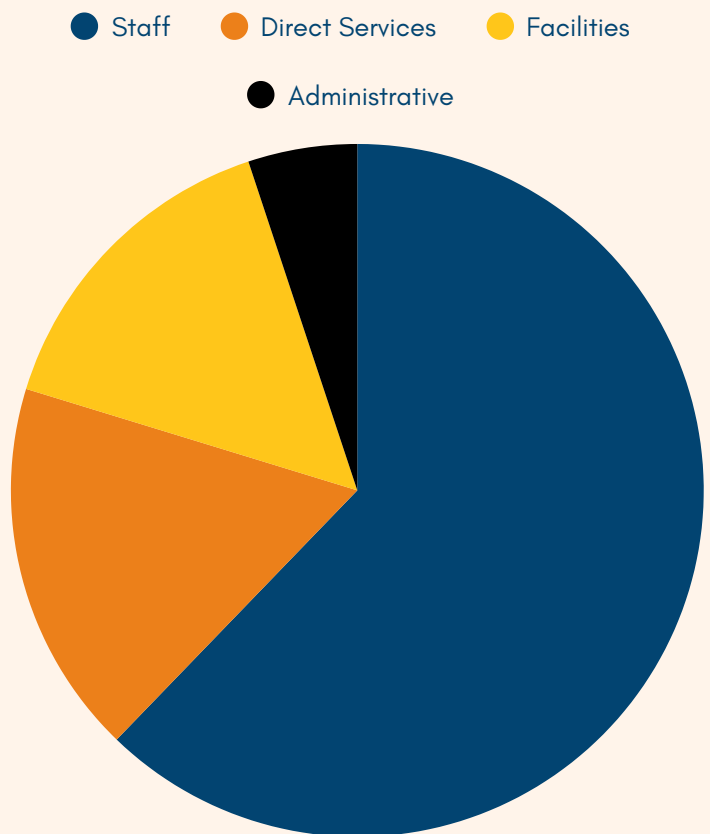


# FINANCIALS



- “Fees” indicate funds from the Veterans Administration Grants and Per Diem Program and staffing for Blue Heron Place.
- 83% of Government Grants include funding from the City of Missoula for Johnson Street Emergency Shelter operations.

## Expenses



- Over 80 staff members operated two shelters, providing compassionate care to over 2,000 of Missoula’s neighbors.
- Our dedicated staff are the most essential piece of the puzzle for our organization, and we are committed to our goal of paying a thriving wage.

Data represents the organizations’ state of financial position at the end of 2024. For our full audited financials please refer to <https://www.guidestar.org/profile/23-7439391>

# DONATIONS

# donations

2000

1500

1000

500

0

\$1-100

\$100-200

\$200-500

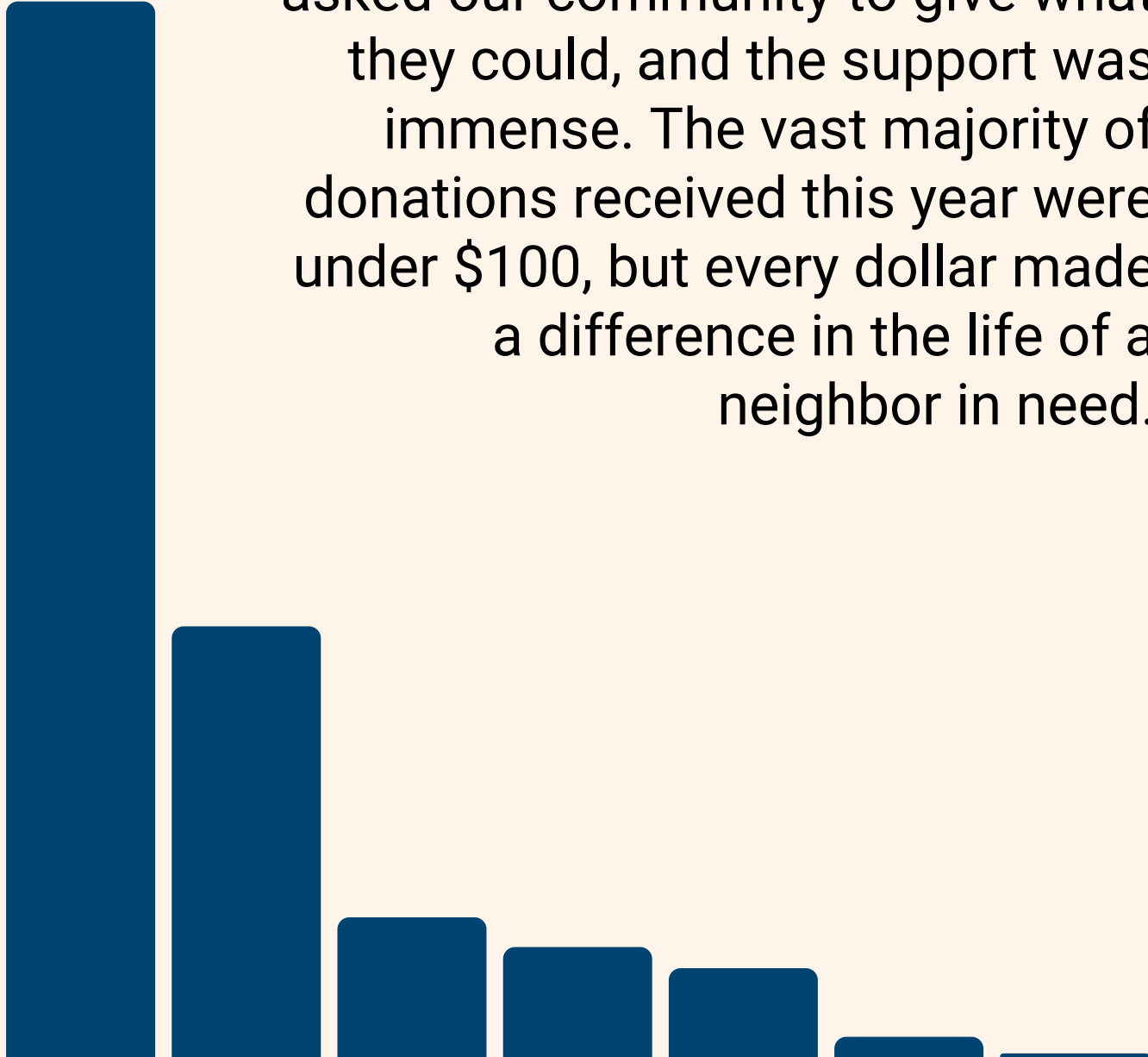
\$500-1,000

\$1,000-5,000

\$5,000-10,000

\$10,000+

In our 50<sup>th</sup> Anniversary year, we asked our community to give what they could, and the support was immense. The vast majority of donations received this year were under \$100, but every dollar made a difference in the life of a neighbor in need.



# THANK YOU

The summer of our 50<sup>th</sup> Anniversary, we proudly presented an exhibit of 50 years of hope to the Missoula community. From our humble beginnings as a small group of dedicated volunteers serving one meal a day and sometimes even offering our own homes, we've grown into something truly remarkable. Just look at our building on West Broadway and the journey it represents. Our five programs have been built from the bottom up to serve our neighbors.

The Poverello Center's success over the past fifty years is a testament to the commitment of our incredible community. Donors, volunteers, neighbors, and supporters like you have been the driving force behind our progress and resilience.

As we step into the next chapter of our mission, we're more committed than ever to addressing the needs of our community. We will persist in advocating for policies that uplift our most vulnerable neighbors, continue providing essential resources and support services, and collaborate with community experts to find innovative solutions. Thank you for the support that makes this possible.

With gratitude,  
Jill Bonny, LMSW  
Executive Director, The Poverello Center



The Poverello  
Center, Inc



@poverellomissoula



[linkedin.com/company/  
the-poverello-center](https://www.linkedin.com/company/the-poverello-center)